

# Dell Legacy Adapter

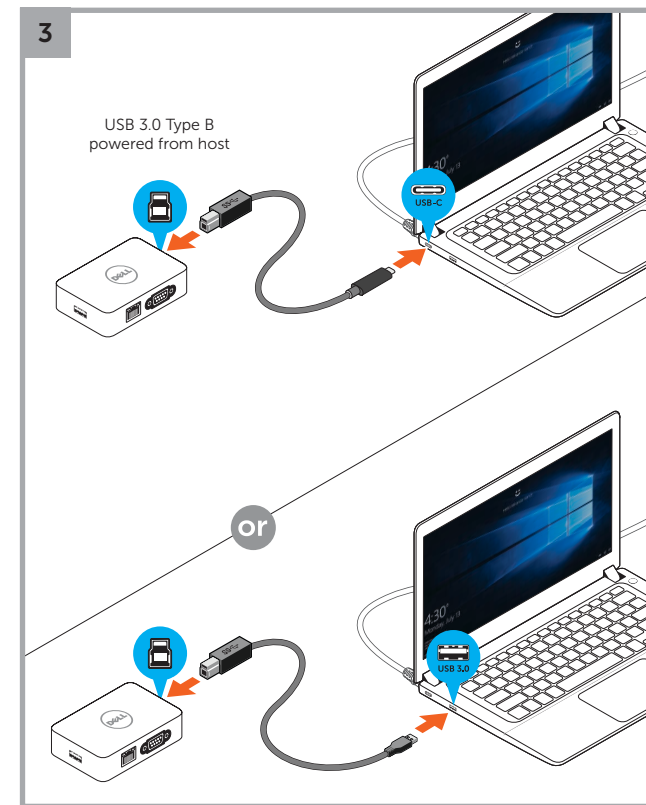
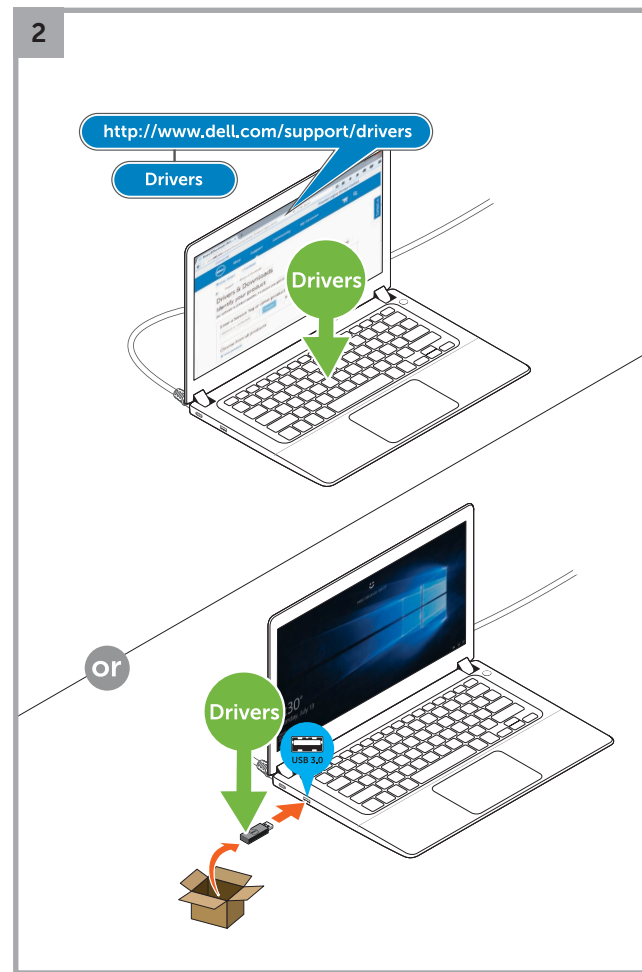
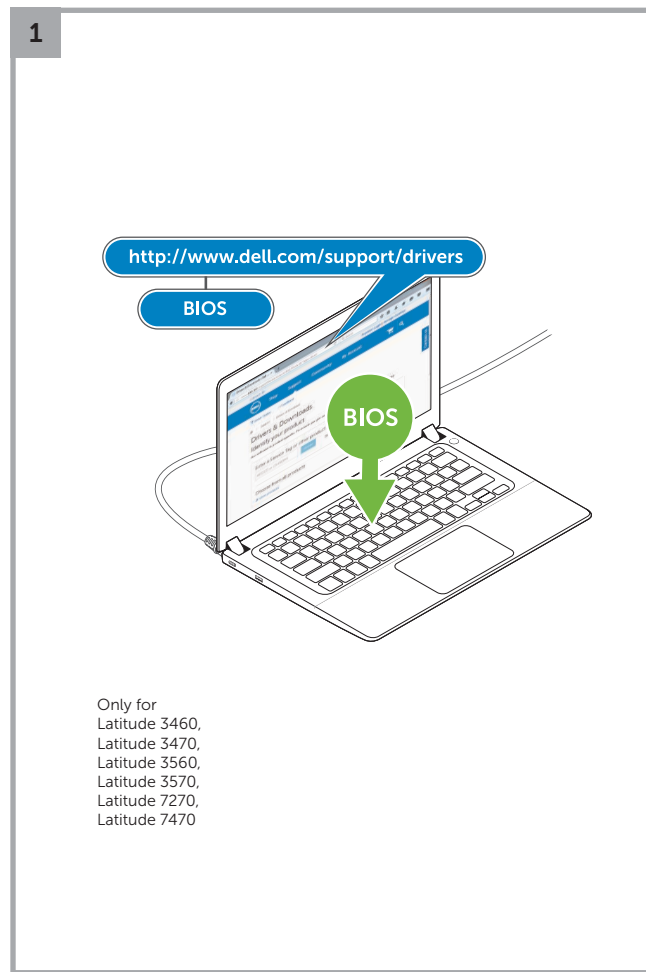
LD17

## Quick Start Guide

### Important

You must update your computer's BIOS and the Dell Legacy Adapter drivers to the latest versions available at [www.dell.com/support](http://www.dell.com/support) before using the Dock.

Older BIOS versions and drivers could result in the Dell Legacy Adapter not being recognized by your computer or not functioning optimally.



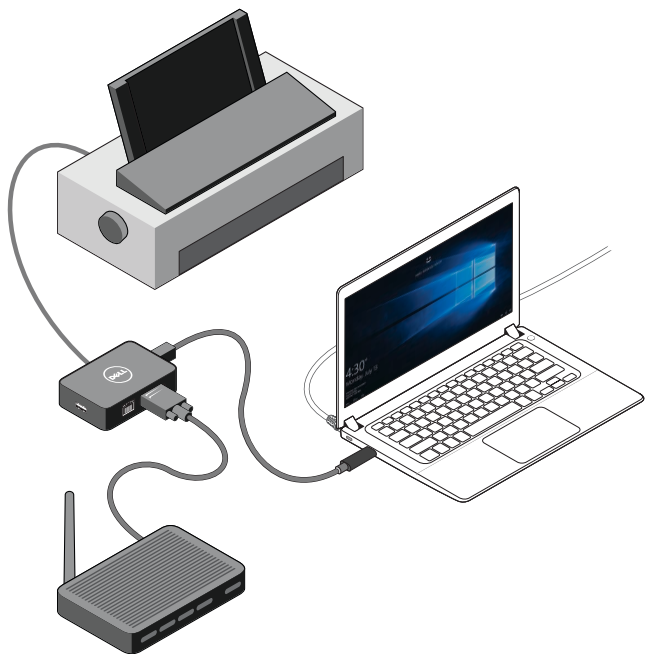
08718NA01



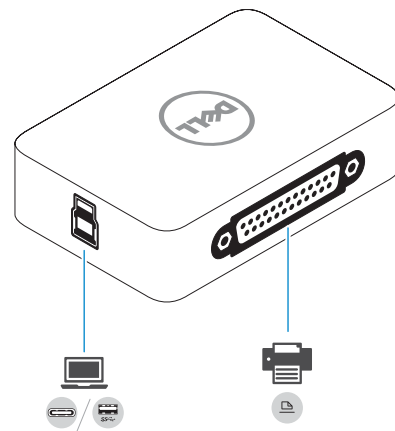
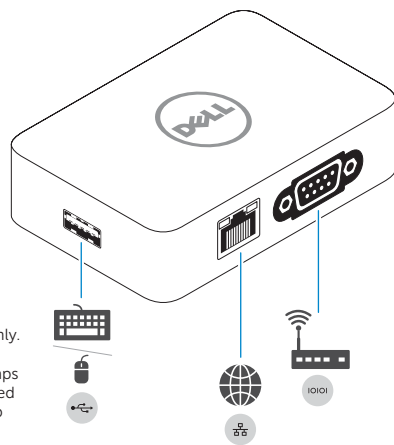
© 2016 Dell Inc.

Printed in China.  
2016-08

Features



USB 2.0 supports up to 1.2 Amps only. Devices requiring more than 1.2 Amps must be connected to laptop/desktop USB port.



[Dell.com/support](http://Dell.com/support)  
[Dell.com/contactdell](http://Dell.com/contactdell)  
[Dell.com/regulatory\\_compliance](http://Dell.com/regulatory_compliance)

Regulatory model : **K19A**  
Regulatory type : **K19A001**